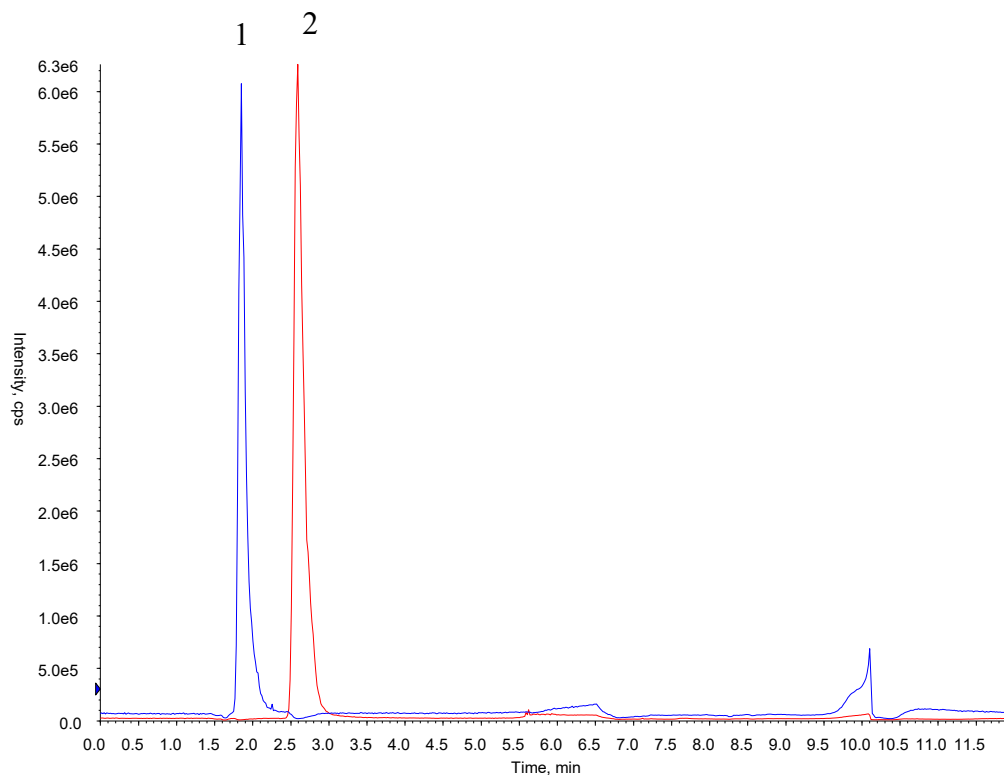


Analysis of Difluoroacetic acid and Trifluoroacetic acid



Conditions

System : ExionLC AD (SCIEX)
Column : InertSustain AQ-C18 (GL Sciences Inc.)
 (3 μ m, 150 x 2.1 mm I.D., Metal-free hardware)
Column Cat. No. : 5020-87063
Eluent : A) 10 mM $\text{CH}_3\text{COONH}_4$
 with 0.1 % CH_3COOH in H_2O

Analyte:

1. Trifluoroacetic acid 5 $\mu\text{g/mL}$
 (Q1/Q3 = 112.8/68.8)
 2. Difluoroacetic acid 1 $\mu\text{g/mL}$
 (Q1/Q3 = 94.8/50.9)

B) CH_3CN

| Time (min) | A (vol %) | B (vol %) |
|------------|-----------|-----------|
| 0 | 95 | 5 |
| 2.0 | 95 | 5 |
| 8.0 | 2 | 98 |
| 8.1 | 95 | 5 |
| 12.0 | 95 | 5 |

Flow Rate : 0.2 mL/min
Col. Temp. : 40 $^\circ\text{C}$
Detection : MS/MS (ESI, Negative)
 CUR CAD IS TEM GS1 GS2
 35 10 -4500 400 30 30

Injection Vol. : 5 μL
Sample : Standard