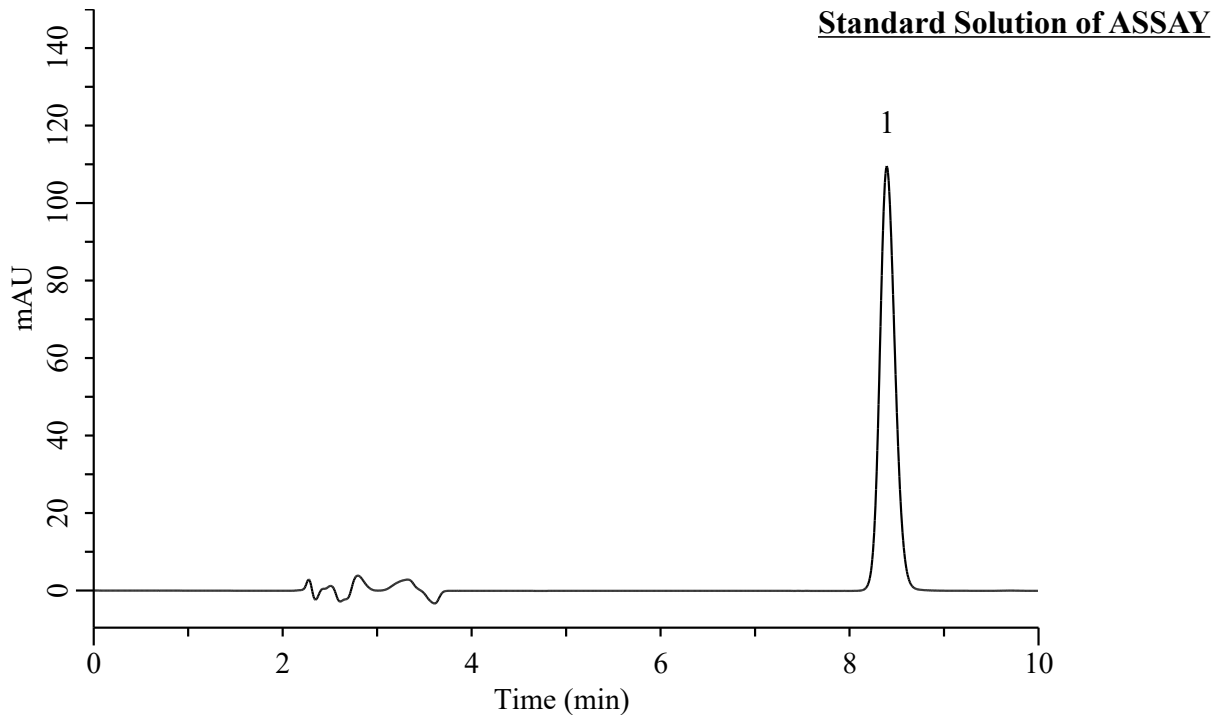


Analysis of Desloratadine

(Under the Condition of the USP43-NF38, Desloratadine Orally Disintegrating Tablets)



Conditions

System	: Primaide HPLC system (HITACHI)	Analyte:	
Column	: InertSustain AQ-C18 (GL Sciences Inc.) (5 μ m, 250 x 4.6 mm I.D.)	1. Desloratadine	7.5 μ g/mL
Column Cat. No.	: 5020-89731		
Eluent	: CH ₃ CN/CH ₃ OH/phosphate buffer solution* = 28/7/65, v/v/v		
Flow Rate	: 1.0 mL/min	RSD of the peak area (%) (n=6)	: 0.17 (\leq 2.0)
Col. Temp.	: 40 °C		
Detection	: UV 258 nm (1430 DAD)	Tailing factor	: 1.13 (\leq 2.0)
Injection Vol.	: 20 μ L		
Sample	: Standard		

*6.8 g/L of monobasic potassium phosphate. Adjust with phosphoric acid to a pH of 3.0.