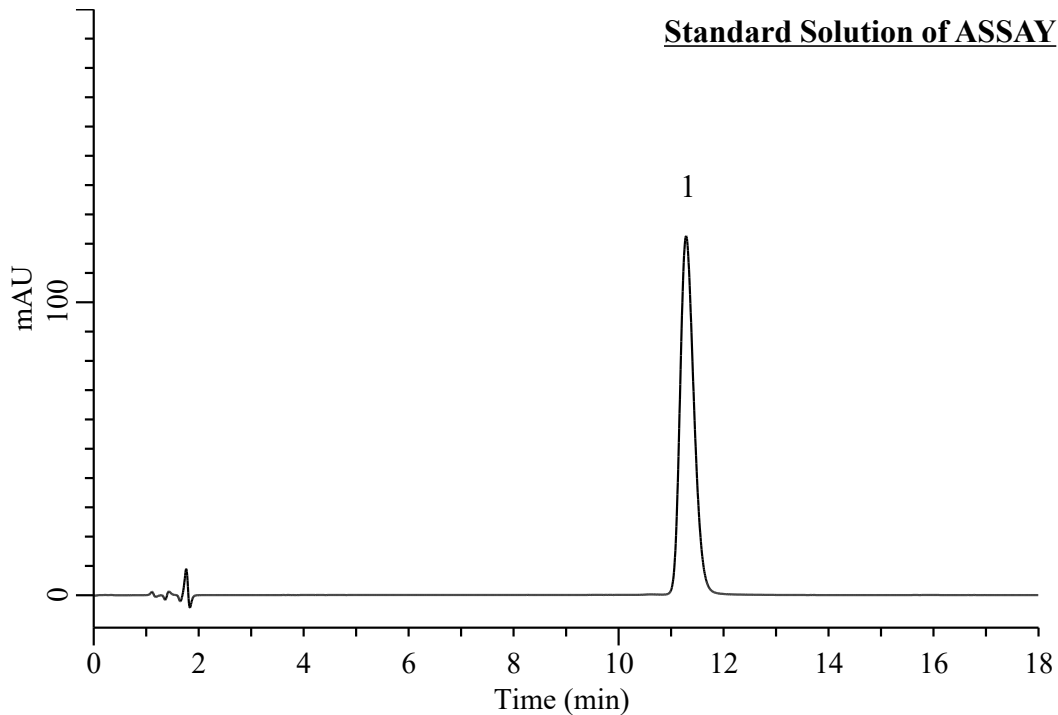


## Analysis of Ofloxacin

(Under the Condition of the USP-NF 2024 Issue 3, Ofloxacin Tablets)



### Conditions

**System** : Chromaster PLUS HPLC system (HITACHI)

**Column** : InertSustain C18 (GL Sciences Inc.)  
(3.5  $\mu$  m, 100 x 4.6 mm I.D.)

**Column Cat. No.** : 5020-90600

**Eluent** : CH<sub>3</sub>CN/Phosphate buffer solution\* = 12/88, v/v

**Flow Rate** : 1.0 mL/min

**Col. Temp.** : 25 °C

**Detection** : UV 294 nm

**Injection Vol.** : 20  $\mu$  L

**Sample** : Standard

### **Analyte:**

1. Ofloxacin 20  $\mu$  g/mL

RSD of the peak area (%) (n=6) : 0.39 ( $\leq$ 1.0)

Tailing factor : 1.25 ( $\leq$ 2.0)

\*Dissolv 2.72 g/L of monobasic potassium phosphate in water. Adjust with diluted phosphoric acid to a pH of 3.3