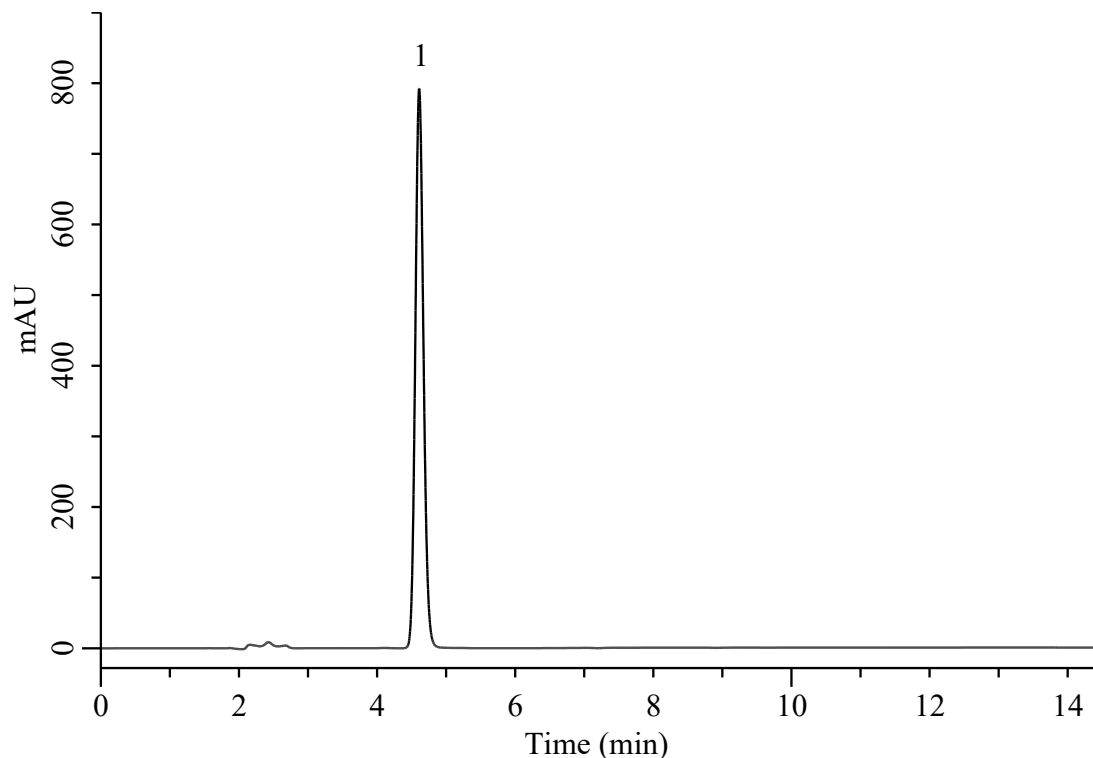


Analysis of Sumatriptan

(Under the Condition of the USP41-NF36, Sumatriptan Injection)



Conditions

System	: Chromaster PLUS HPLC system (HITACHI)	Analyte : 1. Sumatriptan	0.14 mg/mL
Column	: Inertsil ODS-3 (GL Sciences Inc.) (5 μ m, 250 x 4.6 mm I.D.)		
Column Cat. No.	: 5020-01732		
Eluent	: A) CH ₃ CN B) Buffer * A/B = 17/83, v/v	Tailing factor (2)	: 1.12 (\leq 2.0)
Flow Rate	: 1.5 mL/min	RSD of the peak area of 1 (%) (n=6)	: 0.14 (\leq 2.0)
Col. Temp.	: 40 °C		
Detection	: UV 227 nm		
Injection Vol.	: 10 μ L		
Sample	: Standard		

*Add 1.7 mL of butylamine, 0.66 mL of phosphoric acid, and 3.7 g of monobasic sodium phosphate to 900 mL of water. Mix, and adjust with 1 N sodium hydroxide to a pH of 7.5 ± 0.1 . Dilute with water to 1000 mL.