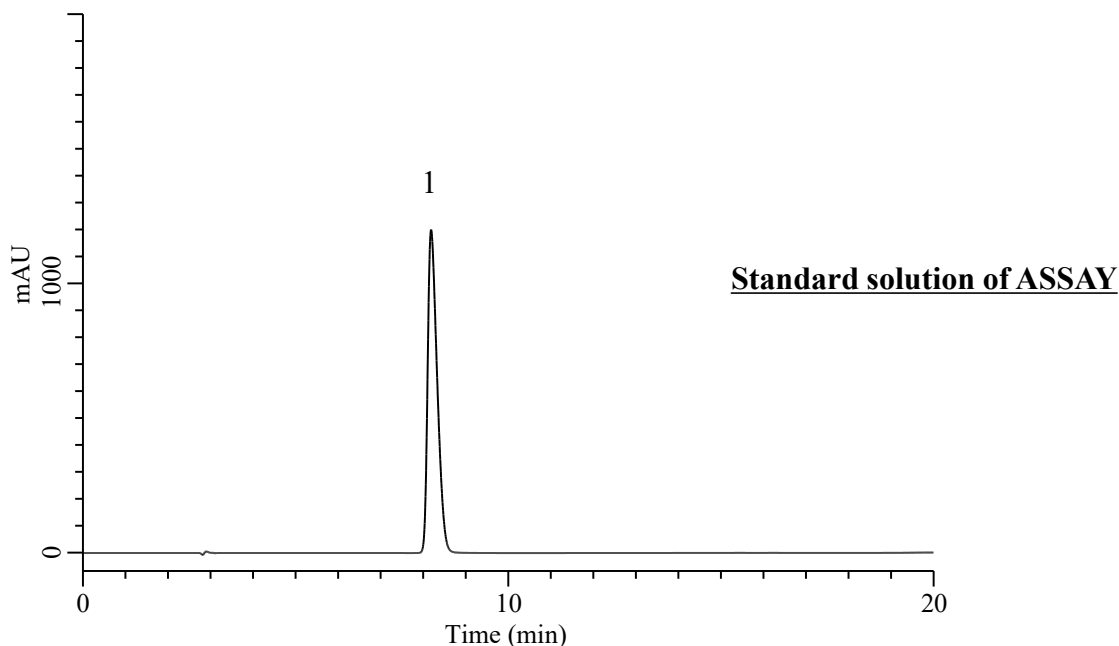


Analysis of Xylazine

(Under the Condition of the draft for USP, Xylazine)



Conditions

System : Chromster PLUS HPLC system (HITACHI)
Column : Inertsil WP300 C18 (GL Sciences Inc.)
 (10 μ m, 300 x 3.9 mm I.D.)
Column Cat. No. : 5020-90660
Eluent : A) CH₃CN
 B) Solution*

Analyte:
 1. Xylazine 0.4 mg/mL
 Tailing factor : 1.53 (0.8 - 1.8)
 RSD of the peak area (n=6) : 0.07 (\leq 1.0)

Time (min)	A (vol %)	B (vol %)
0	30	70
5	30	70
10	40	60
15	40	60
16	30	70
20	30	70

Flow Rate : 1.0 mL/min
Col. Temp. : 40 °C
Detection : UV 226 nm (5430 DAD)
Injection Vol. : 10 μ L
Sample : Standard

* : Dissolve 3.03 g of sodium 1-heptanesulfonate in 800 mL of water, adjust with 2N sulfuric acid to a pH of 3.0, and dilute with water to 1000 mL.