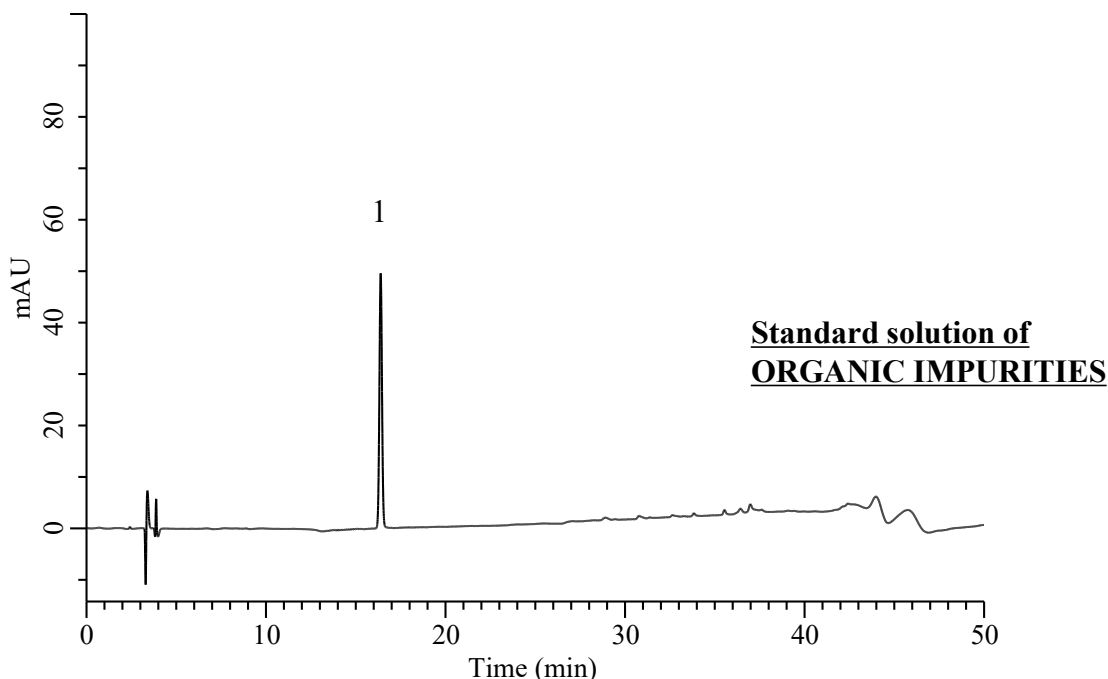


Analysis of Xylazine

(Under the Condition of the draft for USP, Xylazine)



Conditions

System : Chromster PLUS HPLC system (HITACHI)
Column : InertSustainSwift C8 (GL Sciences Inc.)
 (5 μm, 250 x 4.6 mm I.D.)
Column Cat. No. : 5020-88332
Eluent : A) CH₃CN
 B) Solution*

Analyte:
 1. Xylazine 0.008 mg/mL
 Tailing factor : 1.03 (≦1.5)
 RSD of the peak area (‰)(n=6) : 0.46 (≦5.0)

Time (min)	A (vol %)	B (vol %)
0	25	75
8	25	75
35	70	30
40	70	30
41	25	75
50	25	75

Flow Rate : 1.0 mL/min
Col. Temp. : 40 °C
Detection : UV 205 nm (5430 DAD)
Injection Vol. : 10 μL
Sample : Standard

* : Dissolve 3.03 g of sodium 1-heptanesulfonate in 800 mL of water, adjust with 2N sulfuric acid to a pH of 3.0, and dilute with water to 1000 mL.