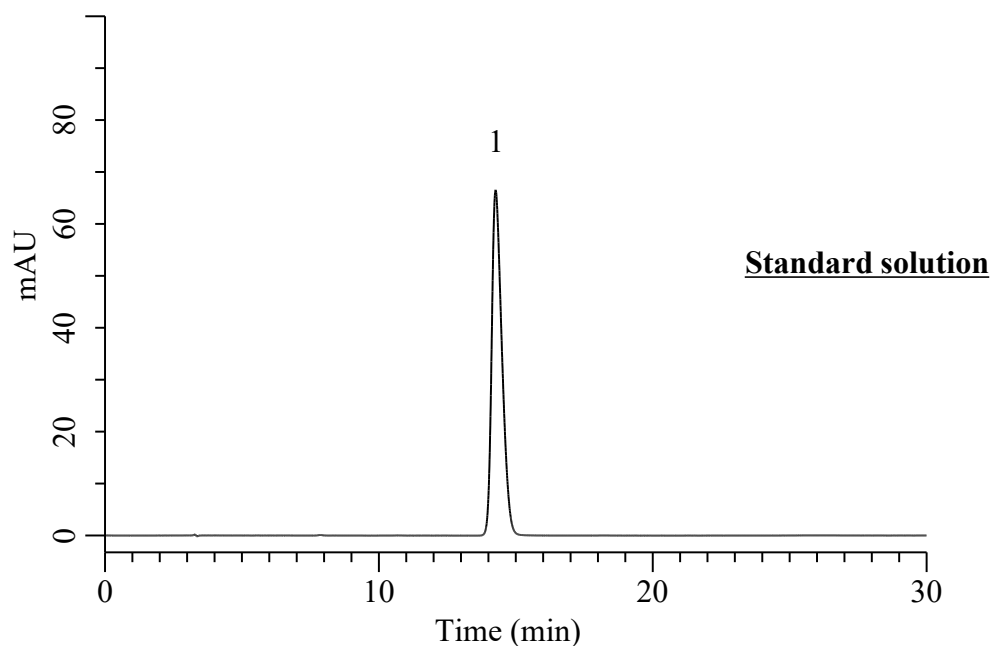


Analysis of Xylazine

(Under the Condition of the draft for USP, Xylazine Injection, ASSAY)



Conditions

System : Chromaster HPLC system (HITACHI)
Column : Inertsil WP300 C18 (GL Sciences Inc.)
 (10 μ m, 250 x 4.6 mm I.D.)

Column Cat. No. : 5020-90662

Eluent : A) CH₃CN
 B) Buffer*
 A/B = 25/75, v/v

Flow Rate : 1.0 mL/min

Col. Temp. : 40 °C

Detection : UV 254 nm (5430DAD)

Injection Vol. : 20 μ L

Sample : Standard

Analyte:

1. Xylazine 0.12 mg/mL

RSD of the peak area (%)(n=6) : 0.28 (≤ 2.0)

* : Dissolve 2.0 g of sodium 1-heptanesulfonate in 1 L of water. Adjust with phosphoric acid to a pH of 3.0.