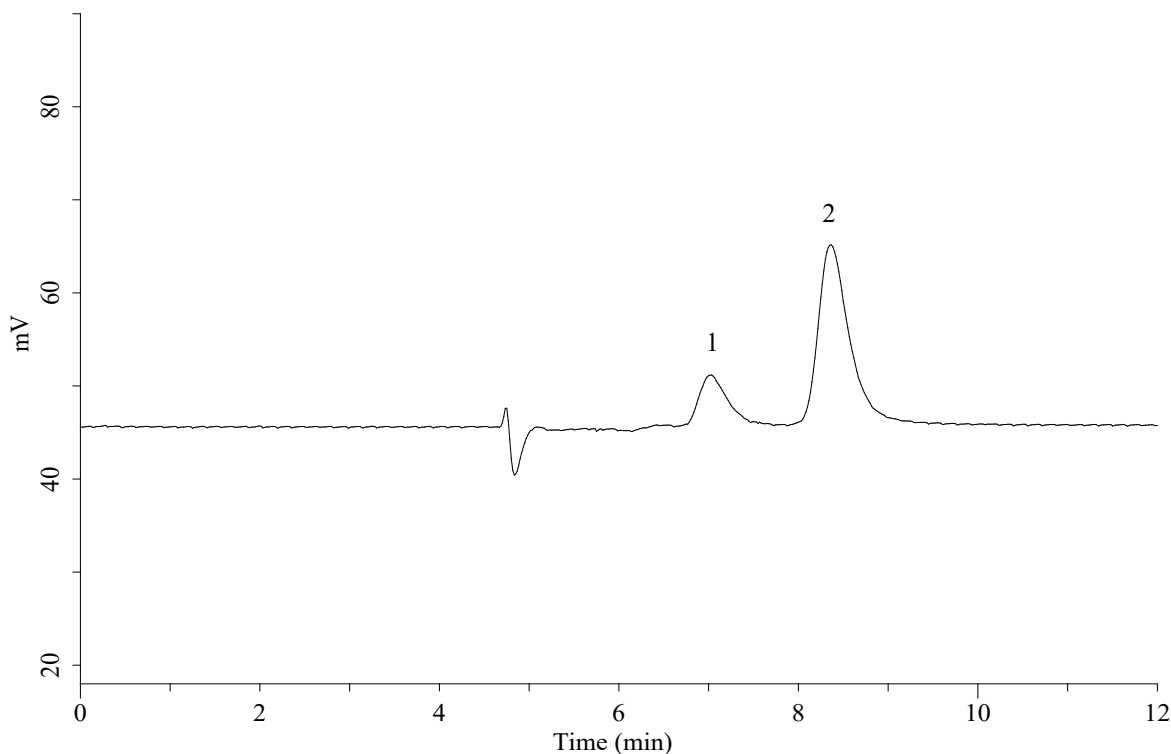


## Analysis of Sugar alcohols



### Conditions

**Column** : InertSphere Sugar-1 (GL Sciences Inc.)  
 (5  $\mu$  m, 150 x 4.6 mm I.D.)  
**Column Cat. No.** : 5020-11001  
**Eluent** : 20 mM NaOH, 8 mM CH<sub>3</sub>COONa in H<sub>2</sub>O  
**Flow rate** : 0.3 mL/min  
**Col. Temp.** : 25°C  
**Detection** : ECD Pulse Mode (ED743, Gold)

E1:	150 mV	t1:	600 ms
E2:	-1500 mV	t2:	50 ms
E3:	600 mV	t3:	50 ms
E4:	-200 mV	t4:	100 ms
		ts:	50 ms

### Analyte:

1. Xylitol  
 2. Mannitol  
 (0.5 mg/L each)

S/N (ASTM)  
 1. Xylitol : 13.6  
 2. Mannitol : 47.9

**Injection Vol.** : 50  $\mu$  L  
**Sample** : Standard