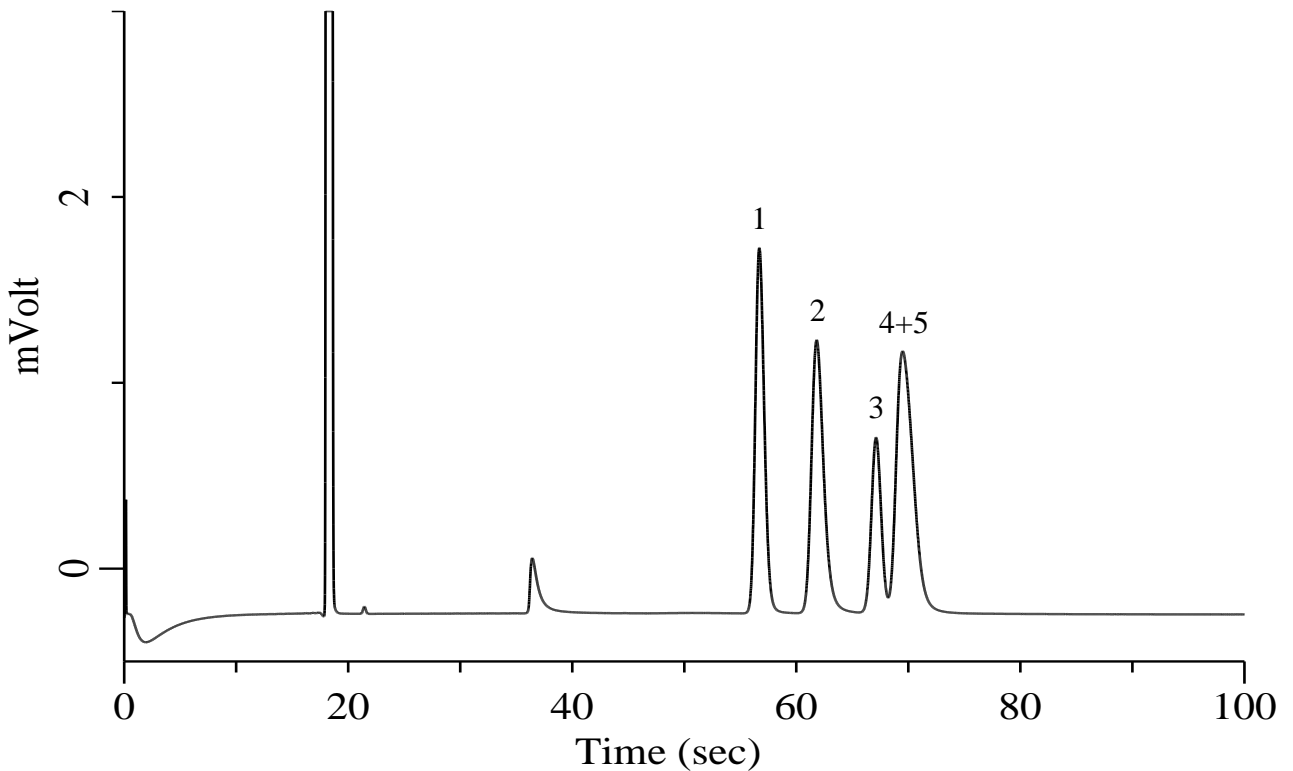


## Hydrocarbons C3

**Specification**  
One GC Channel



**Conditions**

System : Micro GC  
 Column : PoraPLOT Q 10 m  
 Column Temp. : 80 °C  
 Carrier Gas : He 200 kPa  
 Inject Time : 40 msec

**Analyte:**

1. Propylene (C <sub>3</sub> H <sub>6</sub> )	1000 ppm (v/v)
2. Propane (C <sub>3</sub> H <sub>8</sub> )	1000 ppm (v/v)
3. Propadiene (C <sub>3</sub> H <sub>4</sub> )	1000 ppm (v/v)
4. Methyl acetylene (C <sub>3</sub> H <sub>4</sub> )	1000 ppm (v/v)
5. Cyclopropane (C <sub>3</sub> H <sub>6</sub> )	1000 ppm (v/v)

Balance Gas He