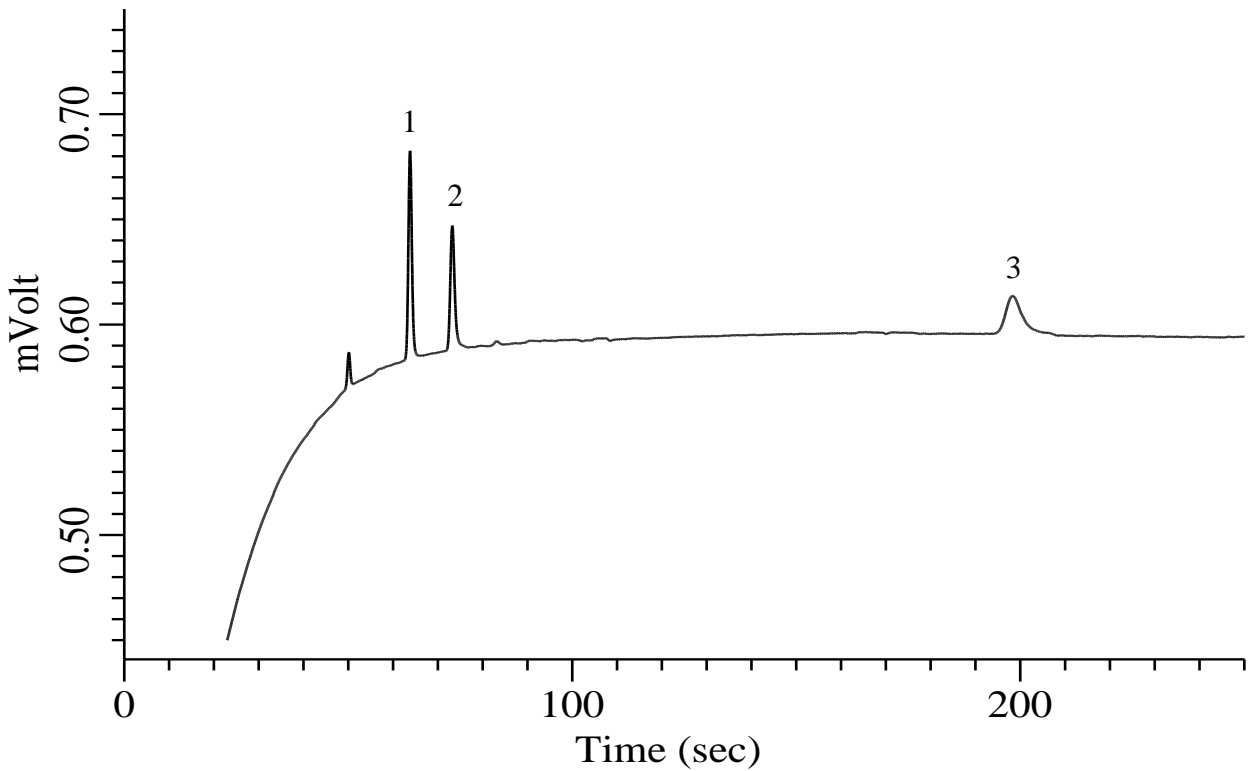


Inorganic gases (N₂, Kr, Xe)

Specification
One GC Channel



Conditions

System : Micro GC
 Column : Molsieve 5A 10 m
 Column Temp. : 100 °C
 Carrier Gas : He 170 kPa
 Inject Time : 40 msec

Analyte:

1. Nitrogen (N₂) 100 ppm (v/v)
 2. Krypton (Kr) 100 ppm (v/v)
 3. Xenon (Xe) 100 ppm (v/v)

Balance Gas He