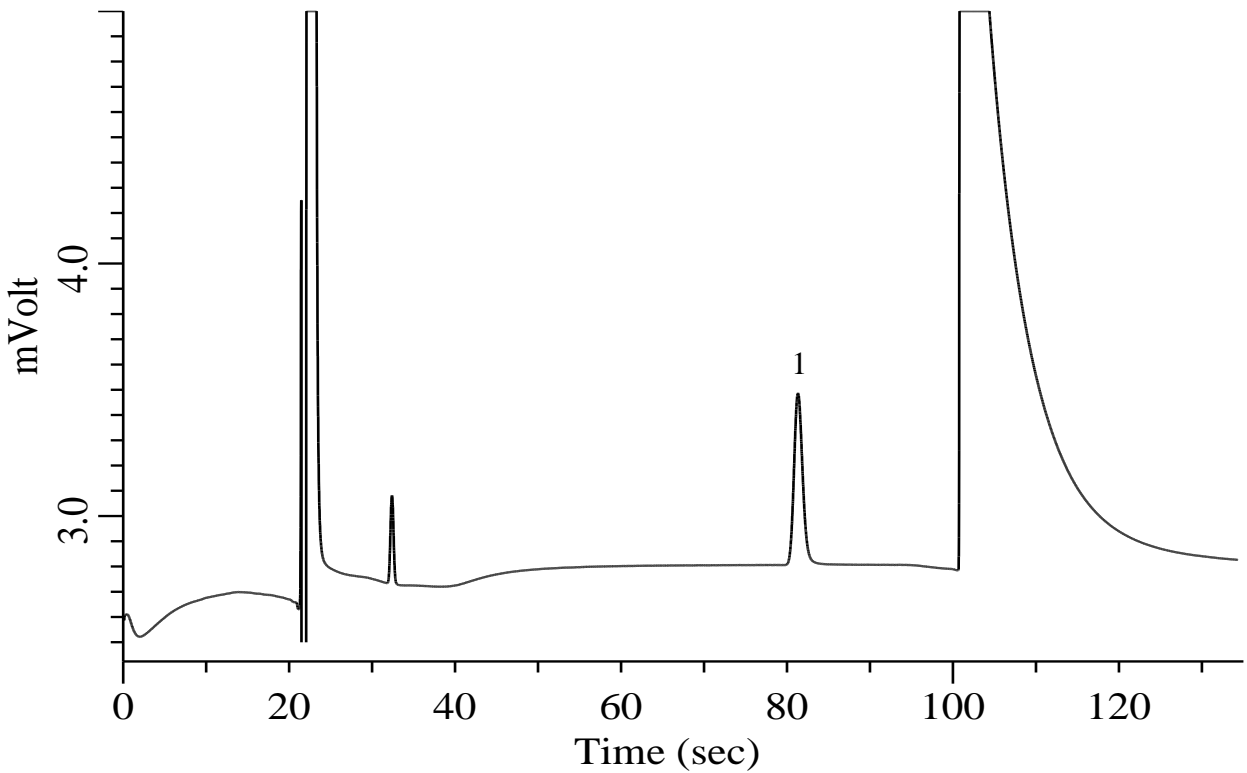


Hydrogen sulfide

Specification
One GC Channel



Conditions

System : Micro GC
 Column : PoraPLOT Q 10 m
 Column Temp. : 40 °C
 Carrier Gas : He 190 kPa
 Inject Time : 40 msec

Analyte:

1. Hydrogen sulfide (H₂S) 500 ppm (v/v)
 Balance Gas H₂