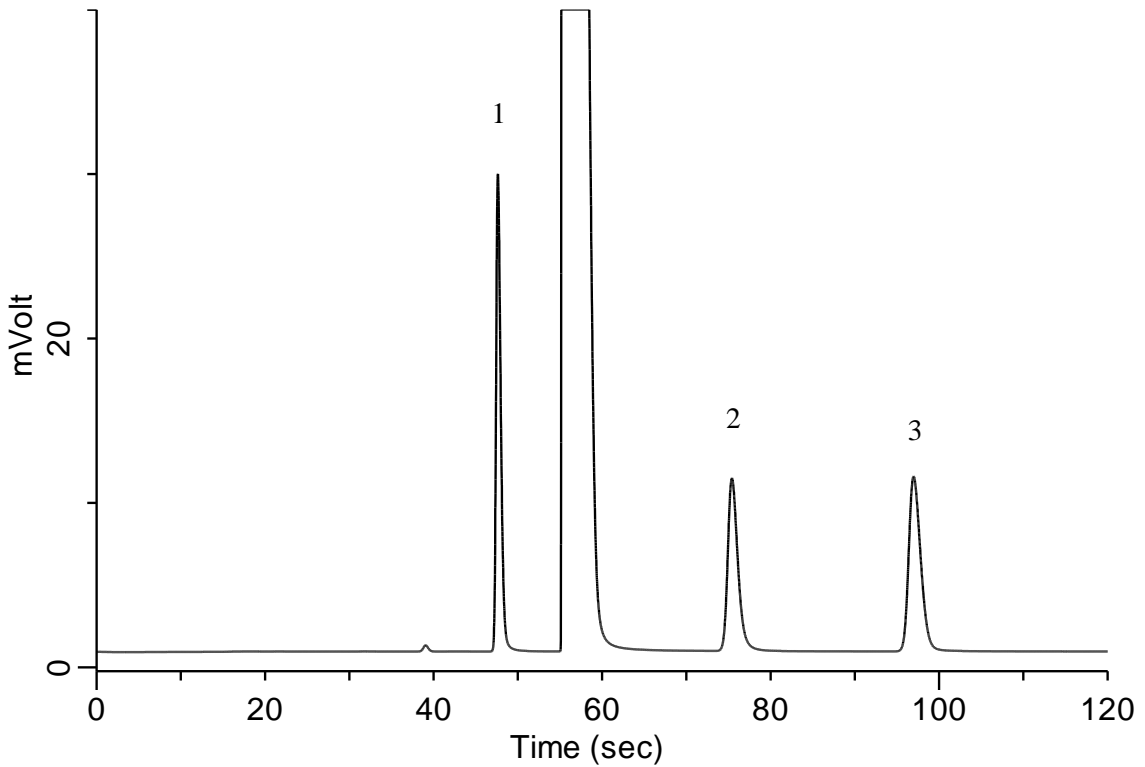


Inorganic gases (O₂, Methane, CO)

Specification

One GC Channel



Conditions

System : Micro GC
 Column : Molsieve 5A 10m
 Column Temp. : 100 °C
 Carrier Gas : He 170 kPa
 Inject Time : 40 msec

Analyte

1.Oxygen (O₂) 2.5 %(v/v)
 2.Methane (CH₄) 2.5 %(v/v)
 3.Carbon monoxide (CO) 2.5 %(v/v)

Balance Gas N₂