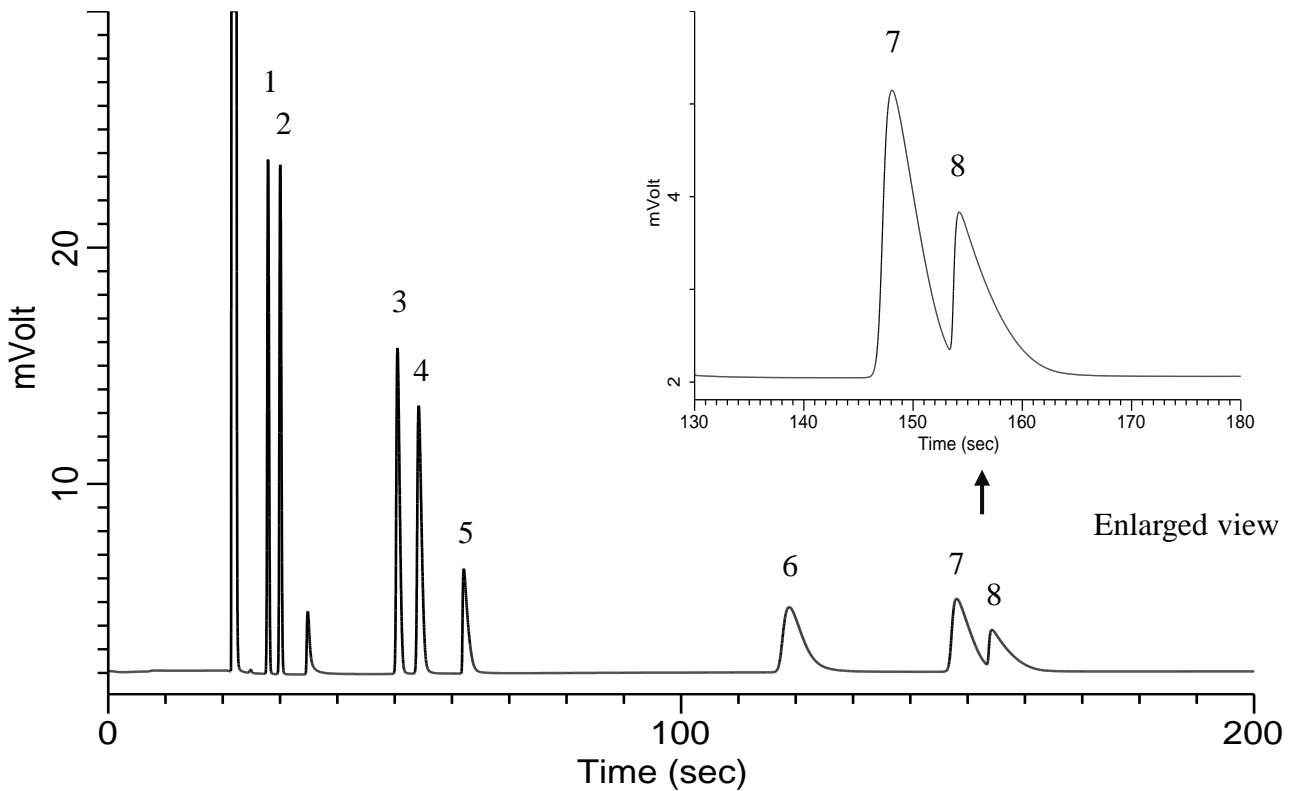


## Hydrocarbons C2-C4 and Alcohol C1-C2

**Specification**  
One GC Channel



**Conditions**

System : Micro GC  
 Column : PoraPLOT Q 10 m  
 Column Temp. : 100 °C  
 Carrier Gas : He 190 kPa  
 Inject Time : 40 msec

**Analyte:**

1. Ethylene (C <sub>2</sub> H <sub>4</sub> )	0.5 % (v/v)
2. Ethane (C <sub>2</sub> H <sub>6</sub> )	0.5 % (v/v)
3. Propylene (C <sub>3</sub> H <sub>6</sub> )	0.5 % (v/v)
4. Propane (C <sub>3</sub> H <sub>8</sub> )	0.5 % (v/v)
5. Methanol	0.5 % (v/v)
6. Isobutane ( <i>i</i> -C <sub>4</sub> H <sub>10</sub> )	0.5 % (v/v)
7. <i>n</i> -Butane ( <i>n</i> -C <sub>4</sub> H <sub>10</sub> )	0.5 % (v/v)
8. Ethanol	0.5 % (v/v)

Balance Gas He