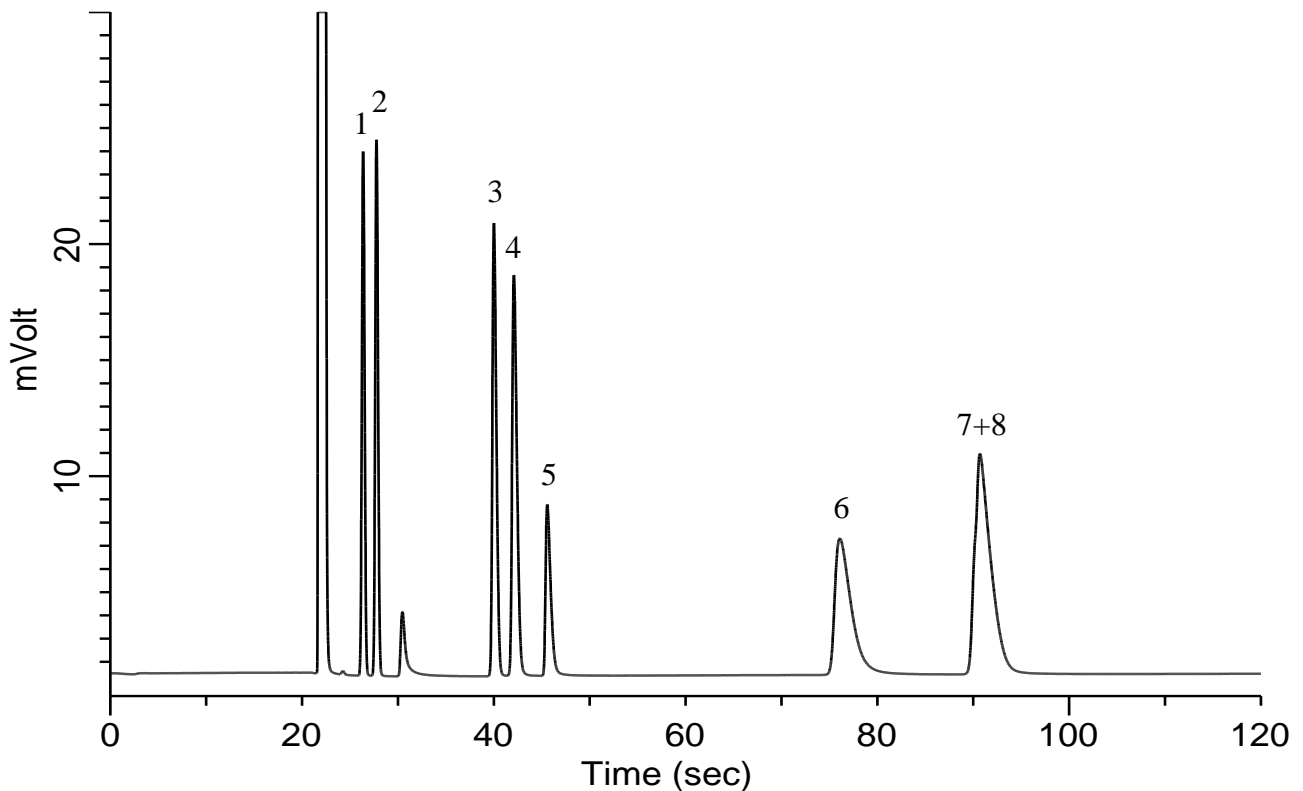


Hydrocarbons C2-C4 and Alcohol C1-C2

Specification

One GC Channel



Conditions

System : Micro GC
Column : PoraPLOT Q 10 m
Column Temp. : 120 °C
Carrier Gas : He 190 kPa
Inject Time : 40 msec

Analyte:

| | |
|--|-------------|
| 1. Ethylene (C ₂ H ₄) | 0.5 % (v/v) |
| 2. Ethane (C ₂ H ₆) | 0.5 % (v/v) |
| 3. Propylene (C ₃ H ₆) | 0.5 % (v/v) |
| 4. Propane (C ₃ H ₈) | 0.5 % (v/v) |
| 5. Methanol | 0.5 % (v/v) |
| 6. Isobutane (<i>i</i> -C ₄ H ₁₀) | 0.5 % (v/v) |
| 7. <i>n</i> -Butane (<i>n</i> -C ₄ H ₁₀) | 0.5 % (v/v) |
| 8. Ethanol | 0.5 % (v/v) |

Balance Gas He