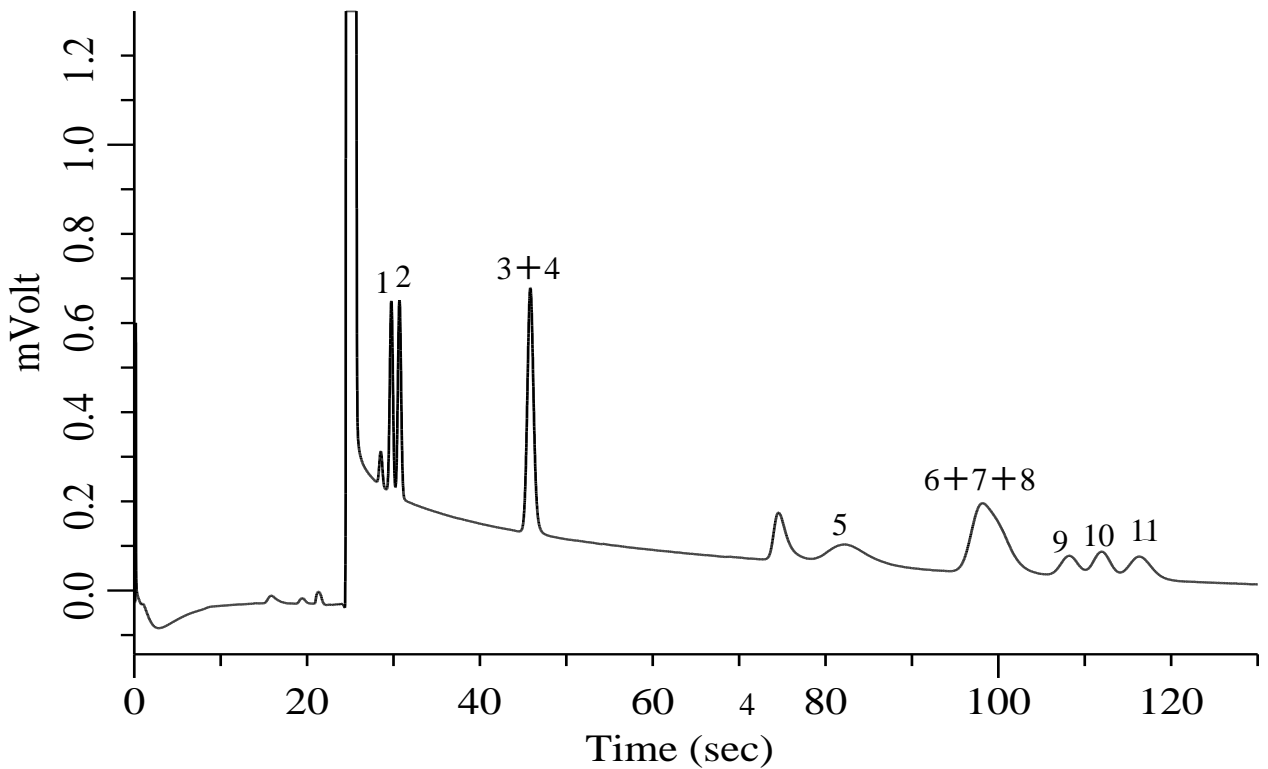


Hydrocarbons C2-C4

Specification

One GC Channel



Conditions

System : Micro GC
Column : PoraPLOT U 10 m
Column Temp. : 80 °C
Carrier Gas : He 190 kPa
Inject Time : 40 msec

Analyte:

1. Ethylene (C ₂ H ₄)	100 ppm (v/v)
2. Ethane (C ₂ H ₆)	100 ppm (v/v)
3. Propylene (C ₃ H ₆)	100 ppm (v/v)
4. Propane (C ₃ H ₈)	100 ppm (v/v)
5. Isobutane (C ₄ H ₁₀)	100 ppm (v/v)
6. Isobutene (C ₄ H ₈)	100 ppm (v/v)
7. 1-Butene (C ₄ H ₈)	100 ppm (v/v)
8. <i>n</i> -Butane (C ₄ H ₁₀)	100 ppm (v/v)
9. <i>trans</i> -2-Butene (C ₄ H ₈)	100 ppm (v/v)
10. 1,3-Butadiene (C ₄ H ₆)	100 ppm (v/v)
11. <i>cis</i> -2-Butene (C ₄ H ₈)	100 ppm (v/v)

 Balance Gas N₂