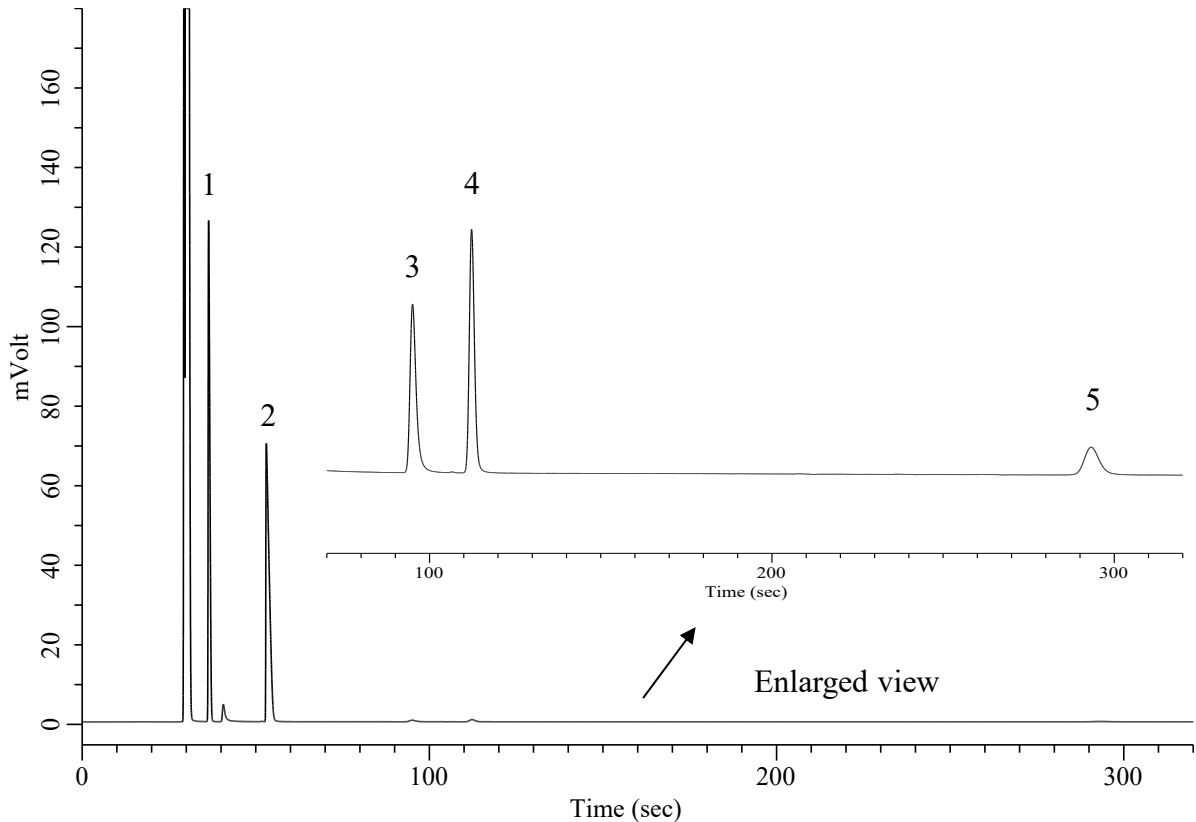


Analysis of Hydrocarbons C2-C5

Specification

One GC Channel



Conditions

System : Micro GC
Column : PoraPLOT Q 10 m
Column Temp. : 120 °C
Carrier Gas : He 190 kPa
Inject Time : 40 msec

Analyte :

1. Ethane (C ₂ H ₆)	5.0 % (v/v)
2. Propane (C ₃ H ₈)	4.5 % (v/v)
3. Isobutane (C ₄ H ₁₀)	300 ppm (v/v)
4. <i>n</i> -Butane (C ₄ H ₁₀)	450 ppm (v/v)
5. <i>n</i> -Pentane (C ₅ H ₁₂)	100 ppm (v/v)

Balance Gas CH₄